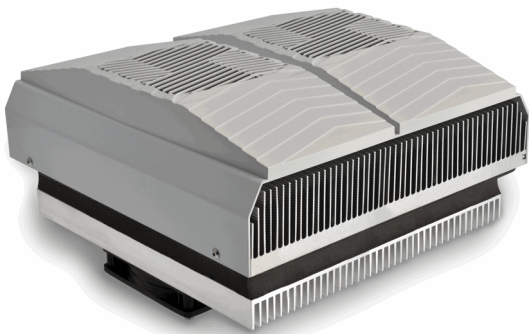


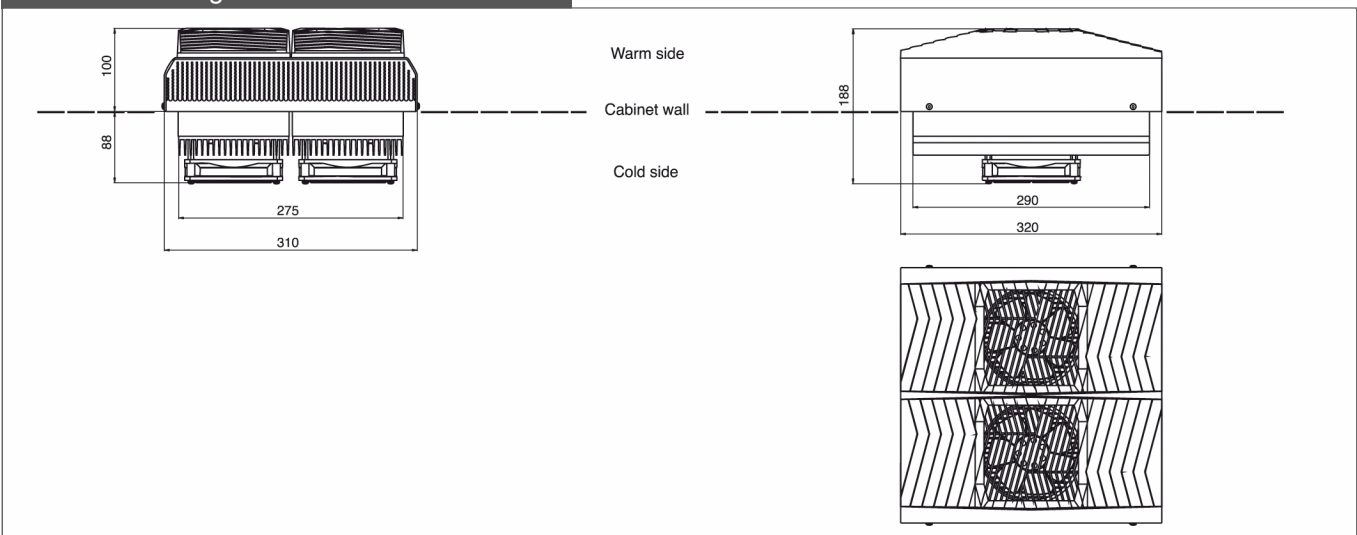
"TCU" THERMOELECTRIC COOLING UNIT

Description: **200 W**

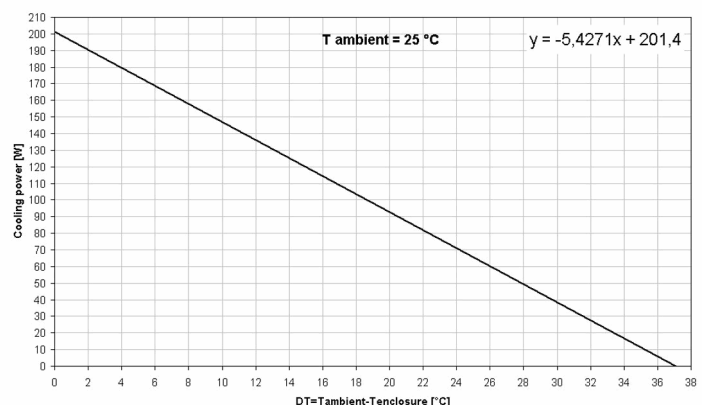
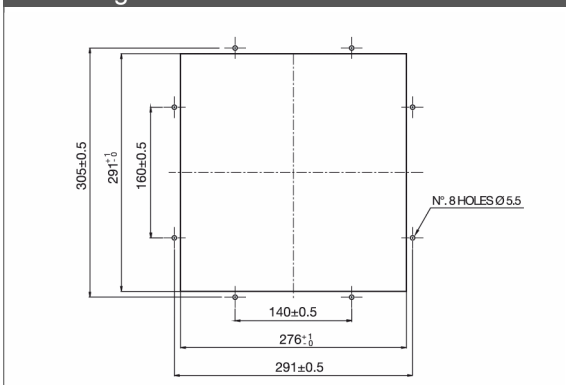


- Standard color:** RAL 7035 and RAL 7032
- Type of material:** Plastic parts in PC/ABS alloy. All parts self-extinguishing, according to UL 94V-0
- Fixing system:** Through mount with ISO M5 screws (not supplied) as indicated in the mounting cut-out. Adjustable for any plate thickness
- Protection degree:** IP55 protection degree of the fan (warm side), according to EN 60529
- Electrical connection:** by 4 pole Cage Clamp® connector
- Sealing:** permanent sealing gasket in closed cell foam polyethylene
- Approvals:** CE

technical drawing



mounting cut-out



All specifications, data and drawing are subject to change without notice and are approximate. Please refer to our terms of sales including our warranty and limited liabilities clauses.

Model	Cooling Power	Voltage	Rated Voltage Range	Rated Current	Max Current	Rated Temp. Range	Weight
	(W)	(V d.c.)	(V)	(A)	(A)	(°C)	(Kg)
TCU2002440IP55-7035	201	24 Vd.c.	17-27 Vd.c.	9.5	11.5	-20 ~ +70	12